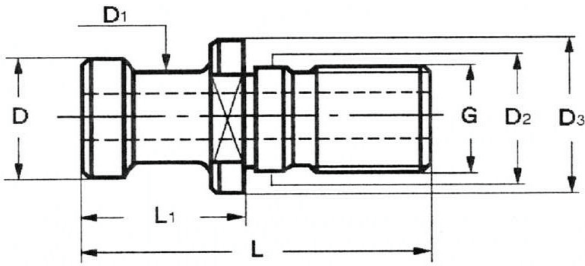


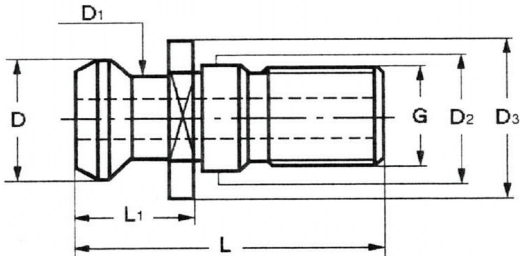
# TIRETTES - AANTREKBOUTEN

## NFE 62541 / ISO 7388-2 TYPE A



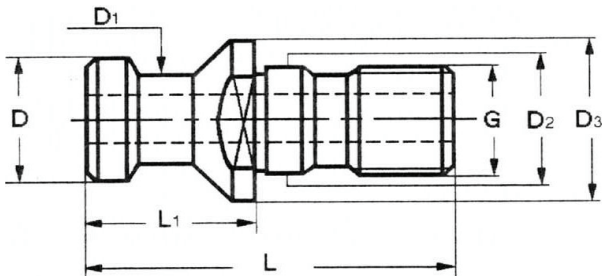
CONE	L	L1	D	D1	D2	D3	G	
40	54	26	19	14	17	23	M16	<b>29,48</b>
50	74	34	28	21	25	36	M24	<b>36,28</b>

## NFE 62541 / ISO 7388-2 TYPE B



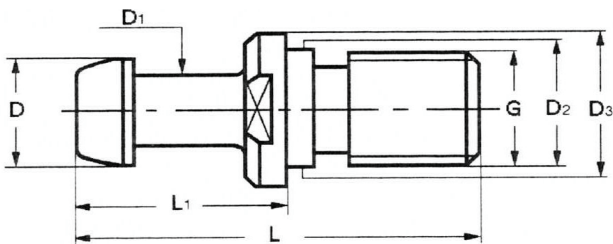
CONE	L	L1	D	D1	D2	D3	G	
40	44,5	16,4	18,8	13	17	22,5	M16	<b>29,48</b>
BT40	47,5	19,3	18,8	13	17	22,5	M16	<b>34,02</b>
50	65,5	25,6	28,5	19,6	25	37	M24	<b>36,28</b>

## DIN 69872



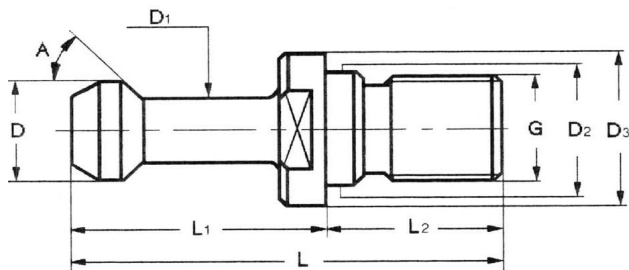
CONE	L	L1	D	D1	D2	D3	G	
40	54	26	19	14	17	23	M16	<b>29,48</b>
50	74	34	28	21	25	36	M24	<b>36,28</b>

## CATER (MAZAK)



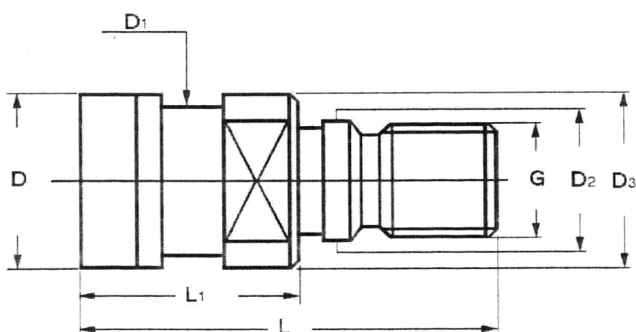
CONE	L	L1	D	D1	D2	D3	G	
40	51,8	26,8	15	10	17	21,5	M16	<b>34,02</b>
BT40	54,6	29,6	15	10	17	23	M16	<b>34,02</b>

## BT (MAS 403)



CONE	L	L1	A	D	D1	D2	D3	G	
40	60	35	45	15	10	17	23	M16	<b>29,48</b>
40	60	35	60	15	10	17	23	M16	<b>29,48</b>
40	60	35	90	15	10	17	23	M16	<b>29,48</b>
50	85	45	46	23	17	25	38	M24	<b>36,28</b>
50	85	45	60	23	17	25	38	M24	<b>36,28</b>
50	85	45	90	23	17	25	38	M24	<b>36,28</b>

## DIN 2080



CONE	L	L1	D	D1	D2	D3	G	
40 ISO	53,1	25,1	25	21,1	17	25	M16	<b>43,10</b>
40 BT	56	28	25	21,1	17	25	M16	<b>43,10</b>
50 ISO	65,1	25,1	39,6	32	25	39,6	M24	<b>54,44</b>